

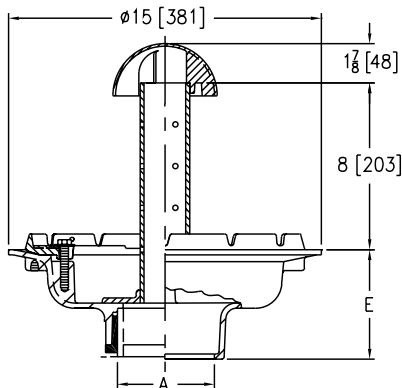
Z349 TERRACE PLANTING AREA DRAIN



ENGINEERING SPECIFICATION

Zurn Z349 terrace planting area drain features Dura-Coated cast iron body, 8" high perforated overflow standpipe with dome, and combination membrane flashing clamp/gravel guard.

A Pipe Size inch [mm]	Approximate Weight lb [kg]
2 [51], 3 [76], 4 [102]	40 [18]
5 [127], 6 [152]	42 [19]



PREFIXES	DESCRIPTION	A PIPE SIZE	LIST PRICE
Z349*	D.C.C.I. Body with Standpipe and Dome	2", 3", 4"	1,335.00
		6"	1,565.00
ZN349	D.C.C.I. Body, Clamp with Polished Nickel Bronze Standpipe and Dome	2", 3", 4"	2,587.00
		6"	2,812.00

OUTLETS (SPECIFY PIPE SIZE IN INCHES AND TYPE OF OUTLET)				
OUTLET TYPE		PIPE SIZE/OUTLET TYPE	E BODY HT. DIM.	ADD
NH	No-Hub	2NH, 3NH, 4NH, 6NH	5-1/4"	N/C
NL	Neo-Loc	2NL, 3NL, 4NL	4-9/16"	N/C
		6NL	5-7/16"	N/C
SUFFIXES				ADD
– C	Underdeck Clamp			244.00
– G	Galvanized Cast Iron			641.00
–SA	Stabilizer Assembly (See Z1036)			148.00
–SD	Longer Standpipe For Each Additional 1" over 8" (Specify Height)	Z		147.00
		ZN		228.00
– SS	Stainless Steel Mesh Screen over Standpipe			POA
BEST SELLER				LIST PRICE
Z349-3NL				1,335.00

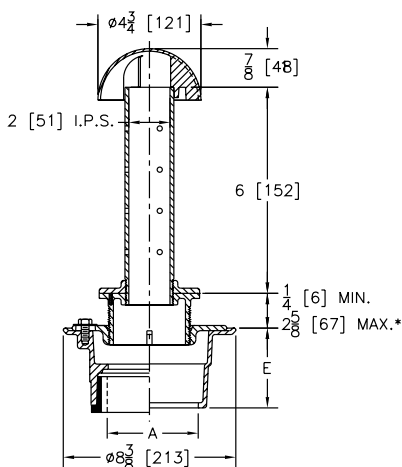
Z350 PLANTING AREA DRAIN



ENGINEERING SPECIFICATION

Zurn Z350 planting area drain features Dura-Coated cast iron body with bottom outlet and combination invertible membrane clamp, vertically adjustable nickel bronze head, floor flange, and 2" diameter perforated standpipe and dome.

A Pipe Size inches [mm]	Approximate Weight lb [kg]
2 [51], 3 [76], 4 [102]	22 [10]



PREFIXES	DESCRIPTION	A PIPE SIZE	LIST PRICE
ZN350*	D.C.C.I. Body with Polished Stainless Steel Standpipe	2", 3", 4"	2,294.00
ZB350	D.C.C.I. Body with Polished Brass Standpipe	2", 3", 4"	1,993.00
OUTLETS (SPECIFY PIPE SIZE IN INCHES AND TYPE OF OUTLET)			
OUTLET TYPE	PIPE SIZE/OUTLET TYPE	E BODY HT. DIM.	ADD
IC	Inside Caulk	2IC, 3IC, 4IC	4-3/16" N/C
IG	Inside Gasket	2IG, 3IG, 4IG	4-3/16" N/C
IP	Threaded	2IP	2-7/16" 80.00
		3IP	2-3/4" 80.00
		4IP	2-3/16" 80.00
NH	No-Hub	2NH, 3NH, 4NH	3-13/16" N/C
NL	Neo-Loc	2NL, 3NL, 4NL	3-7/8" N/C
SUFFIXES			ADD
-C	Underdeck Clamp		150.00
-G	Galvanized Cast Iron		198.00
-P	Trap Primer Connection (Specify 1/2" or 3/4")		150.00
-SD	Longer Standpipe For Each Additional 1" over 6" (Specify Height)	ZB, ZN	98.00
-SS	Stainless Steel Mesh Screen over Dome		POA
DEDUCT			
-PS	Solid Standpipe		-345.00
BEST SELLERS			LIST PRICE
ZN350-2NH			2,294.00
ZB350-3NH			1,993.00
ZN350-3NH			2,294.00
ZN350-3NH-SS			POA
ZN350-3NL			2,294.00
ZN350-4NL			2,294.00

For additional product information, please visit www.zurn.com

*Regularly furnished unless otherwise specified.

Items designated as Best Sellers are most specified and are generally in stock for shipment.

Ⓢ This symbol denotes a product that is engineered to reduce installation and rework time.